

Cleghorn Mfg. Co. Pvt. Ltd.

34, Orphangunge Road, Kidderpore, Kolkata – 700 023

SPECIFICATIONS OF 7.5 M F.R.P MOTOR BOAT



Anaconda Open Type



Anaconda with Fixed Stainless Steel Canopy



Anaconda with Folding Aluminum Canopy





MODEL ANACONDA

DIMENSIONS:

LENGTH	::	7.5M
BREADTH	::	2.50M
HEIGHT	::	0.92M
DRAFT	::	0.3M
WEIGHT	::	1000Kgs. (approx.) without OBM.
PAY LOAD	::	14 People.
CONSTRUCTION	::	Fiberglass Reinforced Plastic.
REINFORCEMENT	::	Quality chopped strand Mat & Woven Roving
MATRIX	::	Isophthalic Polyester Resin Boat grade Integrally colored.
FRAMING	::	Internal stiffener with FRP frames filled with P.U. Foam.
BUOYANCY	::	P.U. Foam of 40/Kg m3
DECK	::	Fiberglass reinforced plastic
FITTINGS	::	All Aluminum Alloy/Stainless Steel.
FENDER	::	Rubber fender.
ENGINE	::	40-90HP Yamaha/Mercury OBM, electric starting with remote control steering system.
CANOPY	::	Provided at an additional Cost

THE FOLLOWING WILL BE SUPPLIED ALONG WITH THE BOATS :-

1.	Cleats.	::	4 Nos.
2.	Towing Bollard	::	1 nos

Description :-

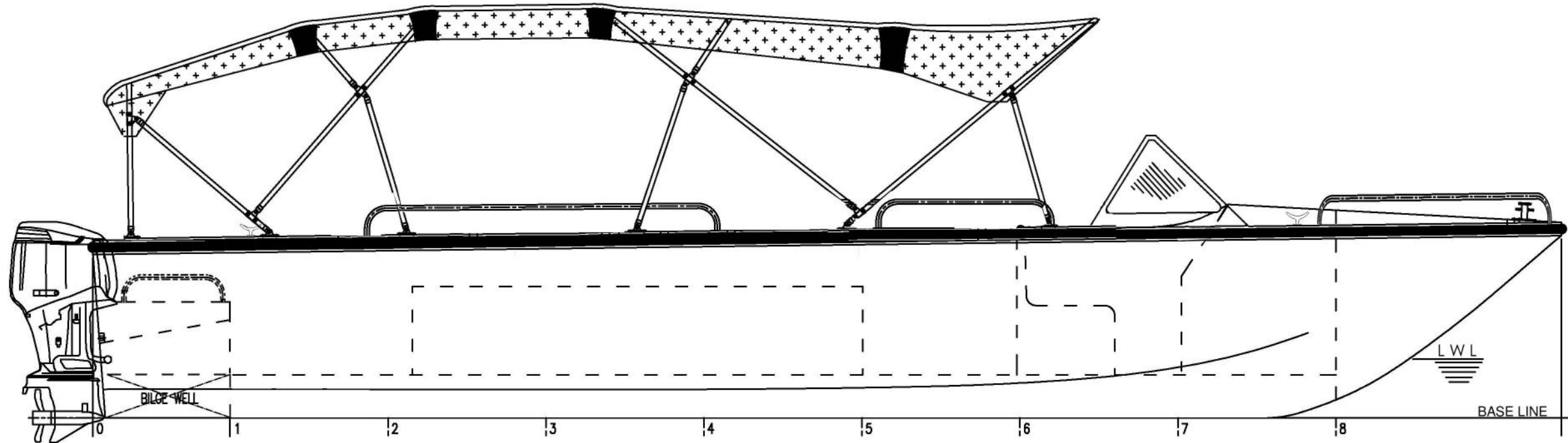
The FRP hull is built in an Air-Conditioned Mold room at controlled temperature and humidity, which is free from dust and particles.

IRS approved **Isothalic Resin** along with **IRS approved Glass fibers** of type **300 CSM, 450 CSM and 610 WR** will be used in the construction of the boat.

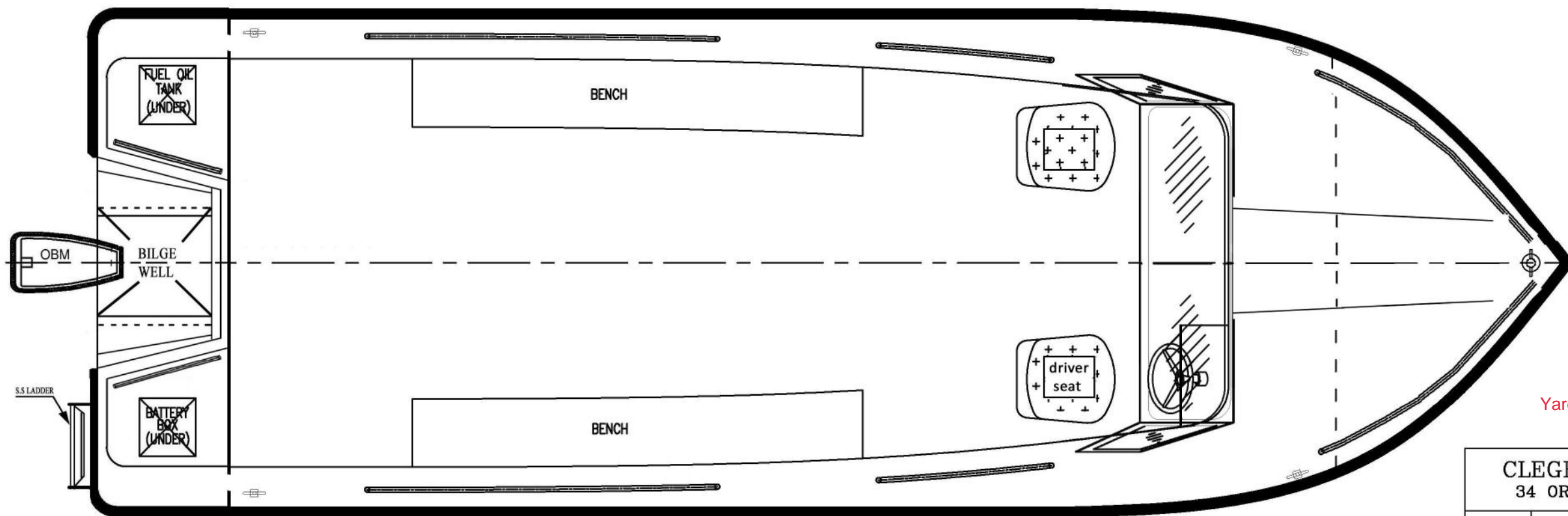
The boat will be double bottom, where the area below the floor is filled with PU foam and storage space will be provided in the boat for stowage of Life saving appliances.

The following items can be provided at an Extra Cost :-

1. M.S/Stainless Steel Tubular fixed structure with canvas canopy or Foldable Aluminium Canopy
2. **Indian Register of Shipping Certification maximum capacity 12 persons**
3. 12V Electrical Bilge Pump
4. OBM
5. Steering System
6. 12V Battery
7. 12V Horn
8. Search Light, Navigation Light
9. Cabin lights
10. GPS cum EchoSounder
11. Life Jacket
12. Life Buoy



PROFILE



PLAN VIEW

MAIN PARTICULARS

LENGTH 7.50 M.
 BREADTH 2.50 M.
 DEPTH 0.93 M.
 DRAFT 0.30 M.
 CARRYING CAPACITY 12 NOS.
 OBM(MAX) ... UPTO 90 HP 4 STROKE

Yard No. CC/ANA/34 - CC/ANA/47

Version : 07

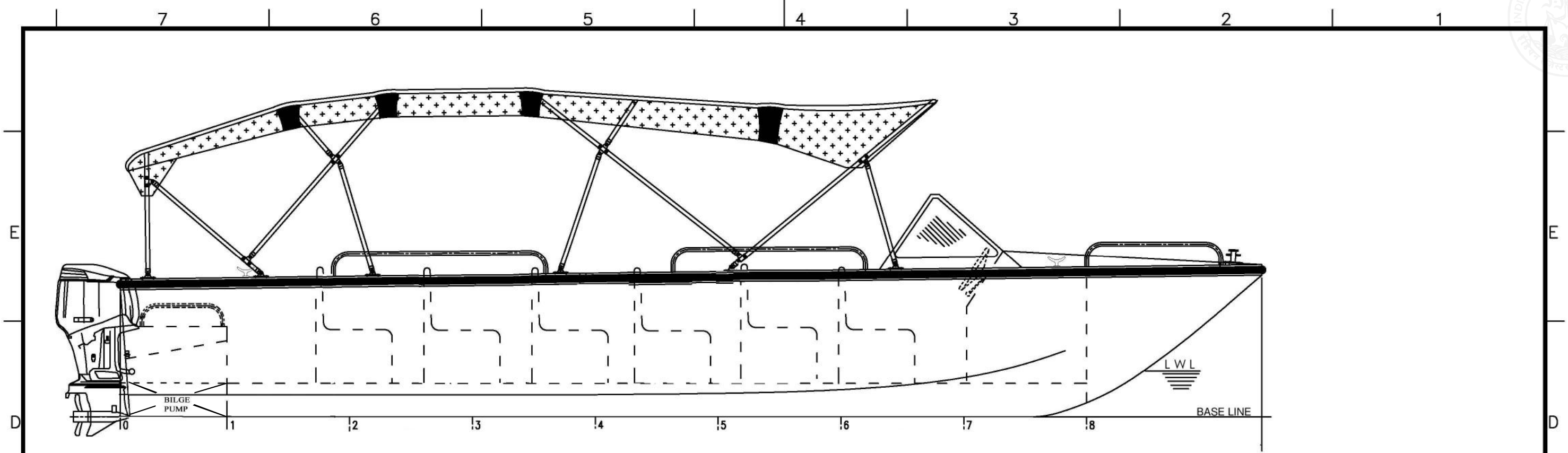
CLEGHORN MFG Co. Pvt. Ltd.
 34 ORPHANGUNGE ROAD, KOLKATA-23

PROJECT	7.50 M FRP BOAT			
TITLE	GENERAL ARRANGEMENT PLAN			
DRAWN	CRK	DRG.NO: CC/7.5M/01	YARD NO:	SHEET No.
CHKD.	T.Chandra	SCALE: 1:25	DATE: 04.07.2018	

CONSULTANT
SARADA NAVCON
 (CONSULTANCY ON SHIP AND BOAT DESIGN)
 F-47, WESTEND CONCLAVE, DANKUNI HOUSING EASTATE,
 P.O.-DANKUNI, HOOGHLY,W.B.



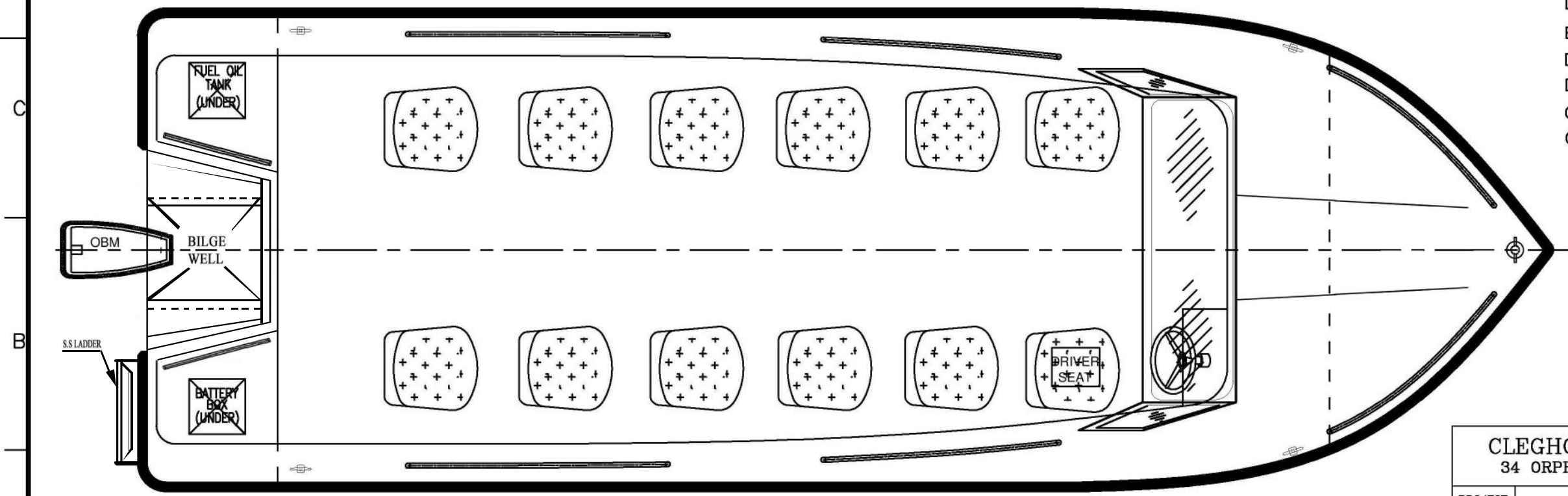
SEE LETTER E-69357-90531



PROFILE

MAIN PARTICULARS

LENGTH 7.50 M.
 BREADTH 2.50 M.
 DEPTH 0.93 M.
 DRAFT 0.30 M.
 CARRYING CAPACITY 12 NOS.
 OBM(MAX) ... UPTO 90HP 4 STROKE



PLAN VIEW

SEE LETTER : E-65661-88811

**INDIAN REGISTER OF SHIPPING
MUMBAI**
 DATE: 18 Jul 2018
NOTED FOR INFORMATION

REV. B

CLEGHORN MFG Co. Pvt. Ltd. 34 ORPHANGUNGE ROAD, KOLKATA-23			
PROJECT	7.50 M FRP BOAT		
TITLE	GENERAL ARRANGEMENT PLAN		
DRAWN	CRK	DRG.NO: CC/7.5M/01	YARD NO:
CHKD.	T.Chandra	SCALE: 1:25	DATE: 29.06.2018
CONSULTANT	SARADA NAVCON (CONSULTANCY ON SHIP AND BOAT DESIGN) F-47, WESTEND CONCLAVE, DANKUNI HOUSING ESTATE, P.O.-DANKUNI, HOOGHLY,W.B.		
SHEET No.			

